

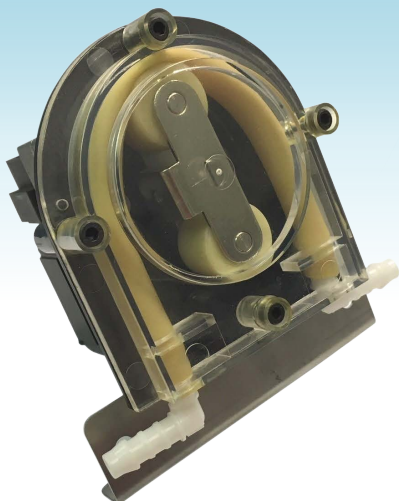


Milano
Componenti



Peristaltic pumps

WE CONTROL THE WATER



PERISTALTIC PUMPS

Peristaltic pumps are dosing pumps for dosing and transferring various types of fluids. Milano Componenti MC1 peristaltic pumps are pumps for dishwashers and washing machines that can also operate dry.

APPLICATIONS

Milano Componenti peristaltic dosing pumps are designed for use in the washing sector as dosing pumps for washing machines, for rinse agent and detergent. Their strength lies in their modular design and their materials, particularly resistant to chemical agents.

MATERIALS

Milano Componenti uses polyamide PA 66 reinforced with glass-fibre and Santoprene™ / silicone, materials able to guarantee high reliability for the product in all its parts.

VARSIONS

On request and for sufficient quantities, Milano Componenti also develops special versions of peristaltic pumps for dishwashers to the client's design.

